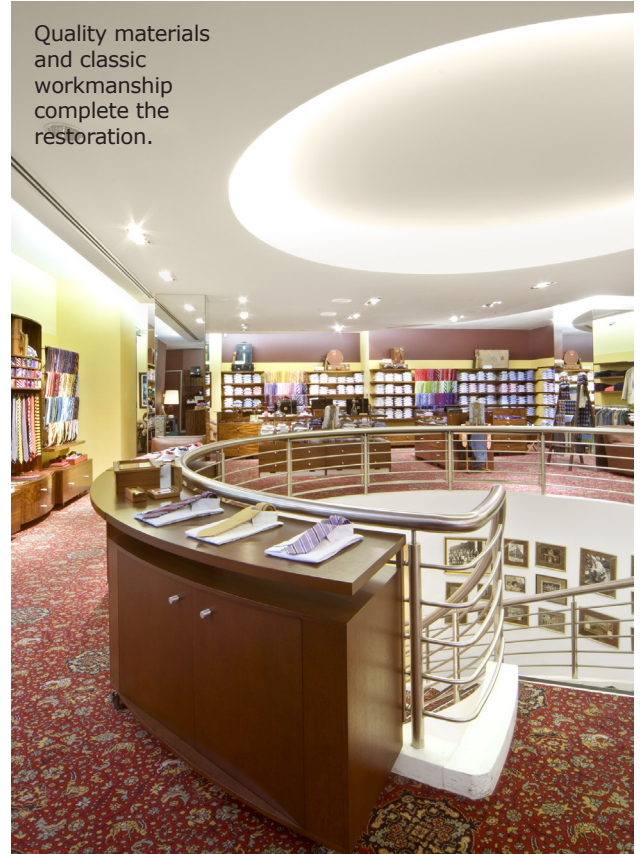


HENRY BUCKS, VIC



A fitout worthy of Australia's flagship in menswear retailing.



Quality materials and classic workmanship complete the restoration.

"The ISIS team was thoroughly professional; there was no fuss or nonsense. They planned thoroughly and worked smoothly with all stakeholders. In my view, ISIS played a significant role in consolidating the Henry Bucks' brand in the delivery of our Melbourne Flagship store and I recommend them most highly."

Jonathan Cecil
Director

Client
Henry Bucks

Location
Melbourne

Duration
8 weeks

HENRY BUCKS PROJECT DELIVERABLES

Time Critical	Business Continuity	Defect Management Critical
✓	✓	✓

Overview

The 40 year old tenancy at 320 Collins Street was beginning to show its age. When the building's owner, HSBC Australia Property Trust, decided to refurbish, Henry Buck's management thought the time was right for a major face-lift of its own.

A difficult site

ISIS faced two major obstacles; difficult site access and the demand to achieve a difficult project completion date. Found at the corner of Collins and Elizabeth Streets, it is debatably Melbourne's busiest intersections. To complicate matters, a busy arcade, popular with shoppers and office workers ran adjacent to the tenancy, creating pedestrian access and safety issues as well. As a result, the city authorities placed access restrictions on the site, barring deliveries and removals altogether from Elizabeth Street, and narrowing the approach and departure zones in Collins Street. ISIS solved the issue with meticulous planning, not just with its own team, but with all other contractors. Using a combination of early starts, overtime, innovative barrier control and signage, ISIS were able to meet the time constraints for the retailer of the eight week exercise.

Quality rejuvenation

Henry Bucks has built its reputation on the finest fabrics, styles and brands, with a leaning towards the classic styles in men's fashion and business dress. The fitout needed to complement that time-honored tendency. As well as constructing a complicated internal staircase, ISIS worked with the designers to reproduce a sense of the sumptuous. Superbly finished joinery, shelving and racking in exotic timbers, with sophisticated floor finishes, fittings and furnishings completed within the accelerated programme.

